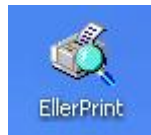


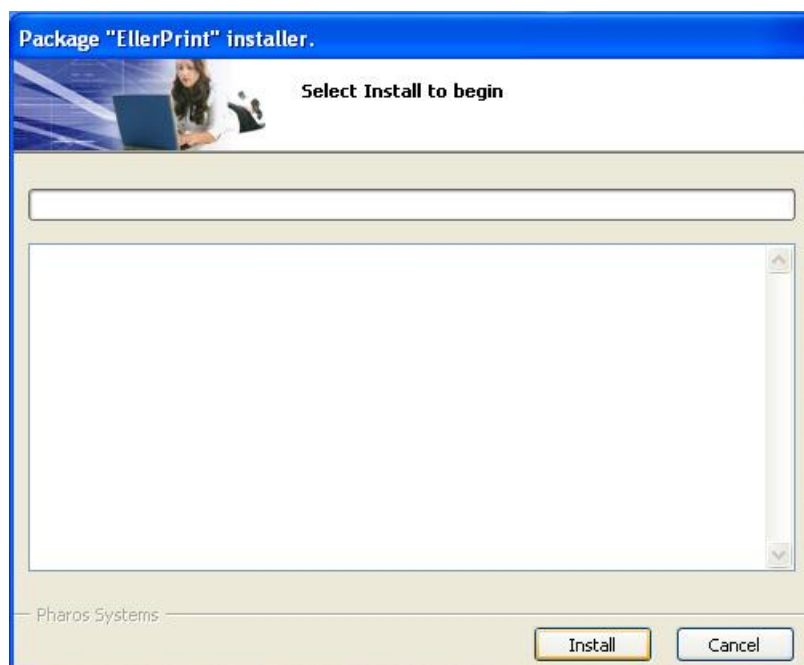
Connecting to Printers in Eller Labs

In order to connect to the black-and-white printers in both the Graduate and Sands Labs (as well as the color printer in the Sands Lab), you will need to download and install the Pharos client on your computer. Please note, this will work on Windows 2000, XP, and Vista. MacOS is not currently supported. Once installed, this software will allow printing over the wired network and UAWiFi wireless network. This **will not work** over the UAPublic wireless network.

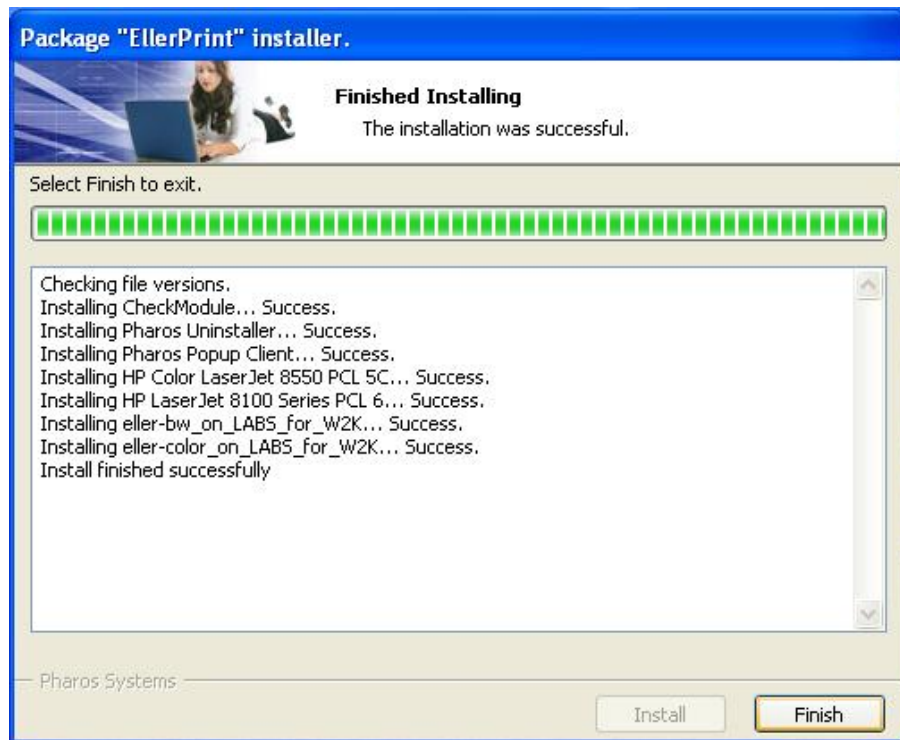
1. Open a web browser and navigate to:
<http://it.eller.arizona.edu/labs/EllerPrint.exe>
2. Download the Eller Printers executable file to your Desktop.
3. Once downloaded, double click EllerPrint.exe



4. Click Install on the Package "EllerPrint" Installer



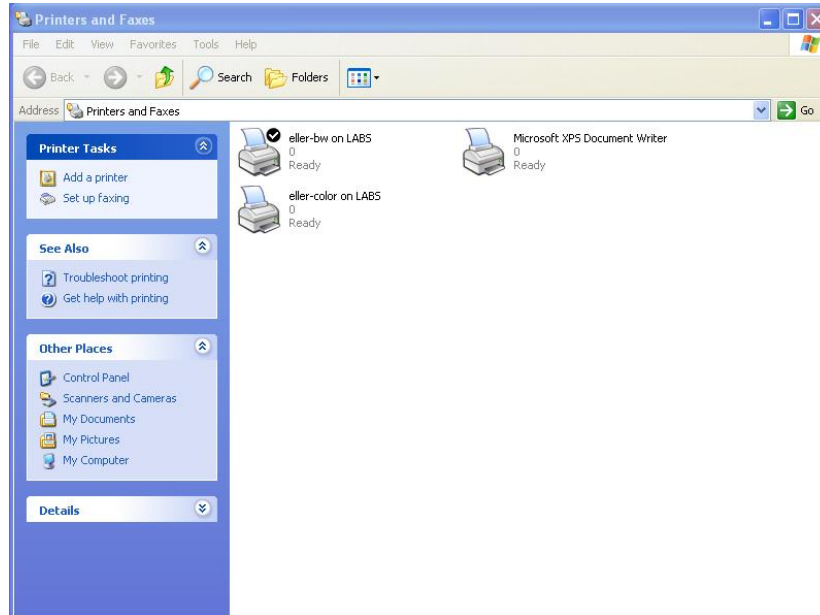
5. This process should take approximately 2 minutes to complete. Once completed click Finish on the Installer screen.



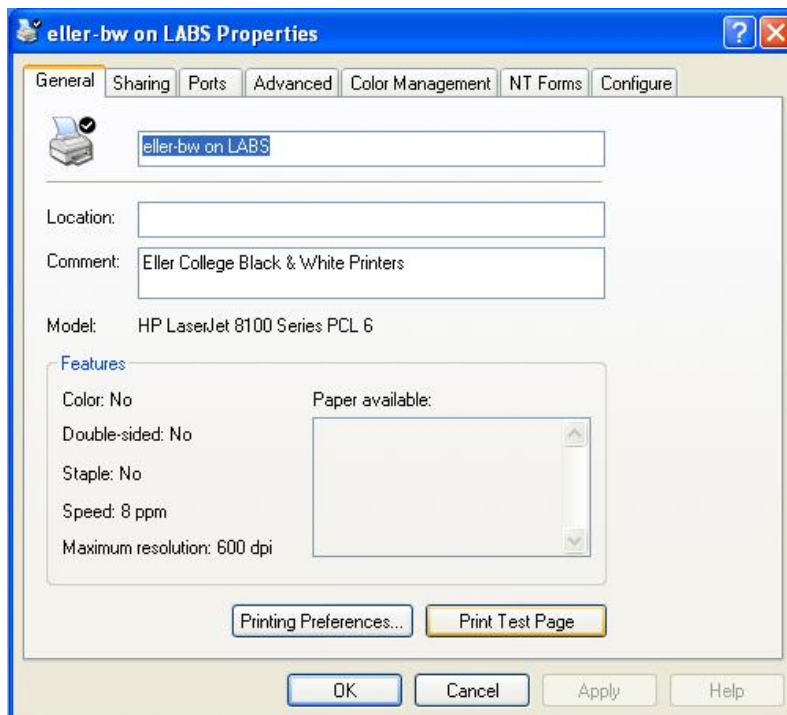
6. Once the installer has completed, you will need to verify that you can connect to the printers. Please turn the page for additional instructions.

Verify the Printers Work

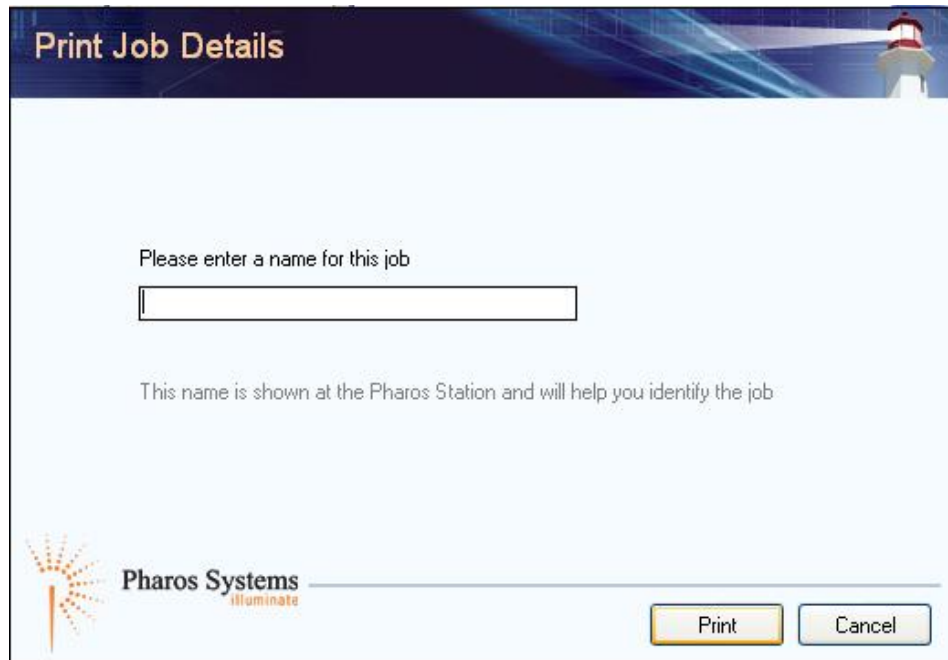
1. Navigate to the State Menu and click on Printers and Faxes.
2. You should now see two new printers listed: **eller-bw on LABS** and **eller-color on LABS**



3. Right click on **eller-bw on LABS** and click Properties
4. Click on the Print Test Page Button



5. If the Pharos Print Job Details popup window appears you have correctly installed the Printers.



The image shows a 'Print Job Details' dialog box. At the top, there is a header with the title 'Print Job Details' and a decorative background featuring a lighthouse. Below the header, the text reads 'Please enter a name for this job' followed by an empty text input field. Underneath the input field, it says 'This name is shown at the Pharos Station and will help you identify the job'. In the bottom left corner, there is the Pharos Systems logo, which consists of a stylized sunburst icon and the text 'Pharos Systems illuminate'. In the bottom right corner, there are two buttons: 'Print' and 'Cancel'.

6. You may hit cancel at this point and close all windows.

NOTE: If you have any trouble installing the printers or need assistance after reading this document, please submit a support request form at:
<http://it.eller.arizona.edu/forms/frmRequestSupport.aspx>.